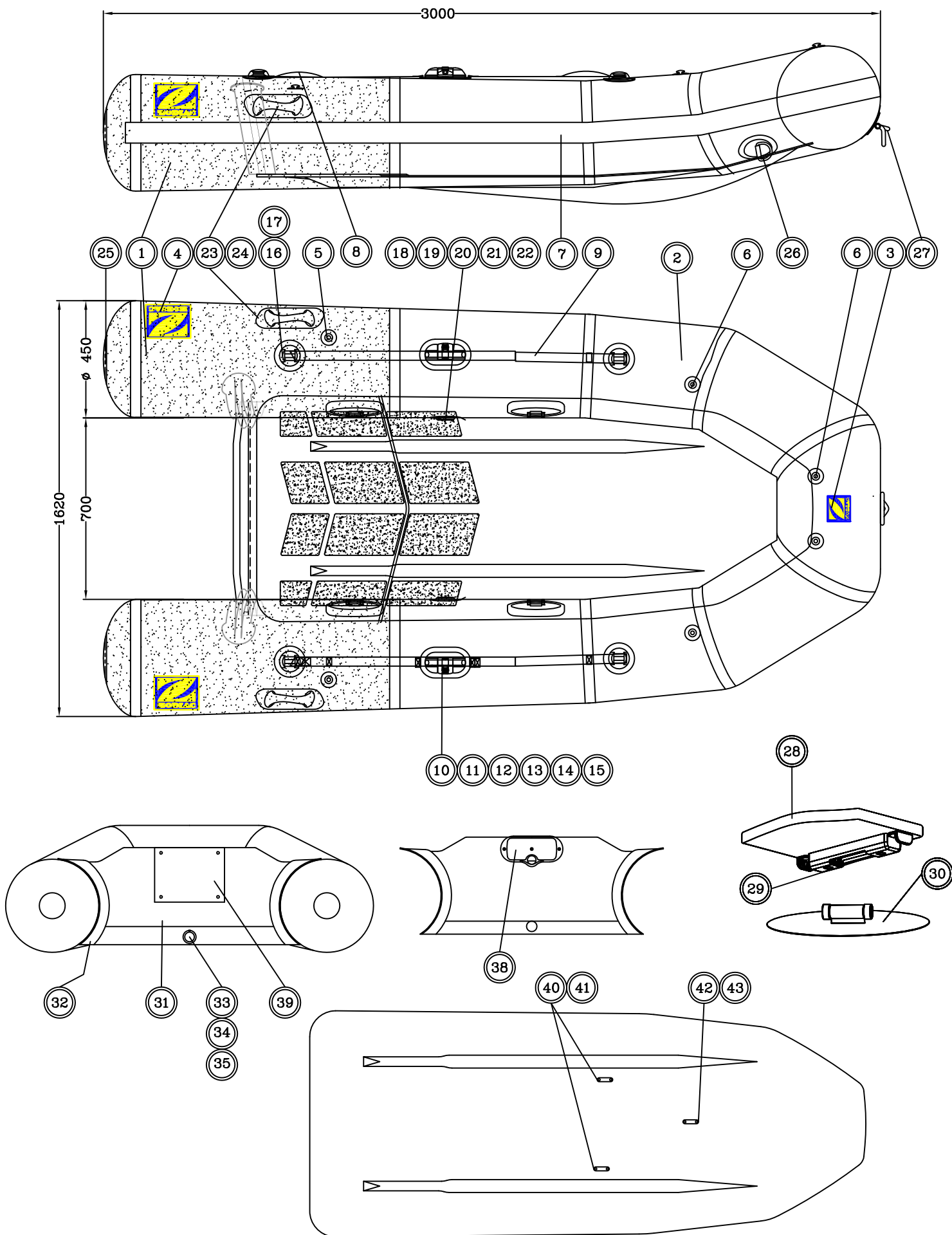


Cadet 300 COMPACT - Z11138



Z11138		CADET 300 COMPACT		11 06 2009
Rep.	Qty	PTN°	Description FR	Description GB
			EQUIPMENT FLOTTEUR -- BUOYANCY TUBE EQUIPMENT	
1	M	Z60395	T/REPAR.950 BLEU-MARINE PVC	NAVY BLUE REPAIR FABRIC
2	M	Z7041	T/REPAR.950 GRIS CLAIR PVC	LIGHT GREY REPAIR FABRIC
3	1	Z60018	LOGO "Z" 02 PM BLEU JAUNE (1)	LOGO "Z" 02 SMALL BLUE YEL(1)
4	2	Z60019	LOGO "Z" 02 GM BLEU JAUNE (1)	LOGO "Z" 02 LARGE BLUE YELL(1)
5	2	Z3957	PLOT FIX.SAC/AVIR NO (10)	PLAST.ATTACH.OAR/BAG10BLK
6	4	Z2816	PLOT FIX.SAC/AVIR.GRIS (4)	PLAST.ATTACH.OAR/BAG GR4
7	1	Z60606	DEFENSE GR.M/BLEU/JAU 8M10	RUB STRAKE M.GR./BLU/YEL.8M10
8	4	Z6276	PG SURMOULEE GRISE SNG 35 (2)	HANDLE F/SAFETY STRAP GREY (2)
9	M	Z2893	SANGLE GRISE L35MM (10M)	GREY STRAP 35MM (10M)
10	2	Z60738	TOLET BLOQUEUR AVIRON GRIS (2)	OAR LOCK JUBILEE CLIP GREY (2)
11	2	Z60073	AXE DN BASC. 01 GR-CL (1)	AXE RECL.OAR 01 GREY (1)
12	2	Z2844	AN.AXE DAME BASCUL.GR(10)	RING F/RECL.OAR GR 10
13	2	Z60075	EMBASE 01 DN BASC. GR-CL (1)	SUPPORT RECLINING OAR 01 GREY
14	2	Z60077	COQUILLE. 02 GR-CL DNB. (1)	SWIVEL RECLINING OAR 02 GREY
15	2	Z60078	BOUTON RESSORT DAME NAGE(2)	RETAINER FOR OAR SWIVEL 02 (2)
16	4	Z6428	PAS.SANGL/DRISS.GR/CL.(1)	MOULD.STRAP/ROPE HOLD 1GR
17	4	Z60143	VERROU SANGLE "T" GR. (4)	RETAINER FOR STRAP "T" GR (4)
18	2	Z60216	BOUCHON VIS VALVE ENC GR CL(5)	CAP THREAD RECES.VALVE(5)GREY
19	2	Z6851	JT BOUCHON V.E. (25)	GASKET/CAP RECESSED VALVE (25)
20	2	Z6852	JT ECROU V.E.(10)	GASKET/SCREW RECES.VALVE (10)
21	2	Z60055	SUPPORT CLAP. VALVE ENC.02(10)	RECESSED VALVE INSERT 2002(10)
22	2	Z60217	CORPS VALVE ENCASTREE GR CL(5)	BODY/SCREW.RECES.VALVE GR(5)
23	1	Z3077	PG LAT GAUCHE GRIS/CL 95	GREY CARR HD LEFT 95
24	1	Z3078	PG LAT DROITE GRIS/CL 95	GREY CARR HD RIGHT 95
25	2	Z60607	CONE 05 CALOTTE NOIRE D201	CONE END 05-D201 BLACK FABRIC
26	2	Z2303	AD 53 ROND GRIS CLAIR (2)	D RING 53 ROUND L.GREY(2)
27	1	Z60093	PG AV RONDE GRI-CL 03	BOW HANDLE LIGHT GREY ROUND 03
			BANC -- WOODEN BENCH	
28	1	Z60518	BANC QUICK FIT 850 GR.CL 05	QUICK FIT BENCH L850 L GREY
29	2	Z60560	SUPPORT MULTIF.GRIS BANC 05(2)	QUICK FIT BENCH RETAINER GR 05
30	4	Z60734	SUPP BANC RENFORCE T/GR.CL (2)	SUPP/GR.FAB.V2 QCK FIT BENCH
			TABLEAU -- TRANSOM	
31	1	Z60578	TABLEAU T3 BLEU NUIT	TRANSOM T3 DARK BLUE
32	2	Z2250	GLISSIERE TABLEAU NOIR (1)	TRANSOM BRACKET MKI/IGT
33	1	Z2218	EMBASE V/VITE EQUIPE (10)	SELF BAILER BASE (10)
34	1	Z2204	MEMBRANE V/VITE (20)	SELF BAILER DIAPH (P20)
35	1	Z2221	BOUCHON V/VITE EQ(10)	SELF BAILER BUNG (P10)
38	1	Z6088	PLAQUE MOTEUR GM 99	MOTOR MOUNTING PLATE S2
39	1	Z2042	PLAQUE MARTYRE VERNIE 12MM	WOODEN TRANSOM PAD12MM WARNISH
			COQUE / HULL	
40	1	Z2903	SANGLE RESERVOIR+PONTET KIT	FUEL TANK STRAP + LOOP (SET)
41	2	Z60443	PONTET DE SANGLE (2)	PLASTIC LOOP (2) F/ STRAP
42	1	Z6740	ECROU A OEIL D 8 INO (10)	EYE BOLT D8 SS (10)
43		Z7045	POINT LEVAGE AVANT (1 JEU)	EYE BOLT SET (BOW LIFT.POINT1)
			EQUIPMENT STANDARD STANDART EQUIPMENT	
	2	Z6425	AVIRON GRIS 1.60XD35 (2)	GREY OAR 1,60XD35 (2)
	2	Z2815	CLIP AVIRON GRIS CLAIR(2)	OAR CLIP -GREY PLASTIC- (2)
	1	Z60977	GONFLEUR BRAVO 7	BELLOWS-BRAVO 7 COMPLETE (1)
	1	Z60811	TUYAU GONFLEUR ANNELE 1M70-08	INFLATABLE HOSE/08 FOOT PUMP
	1	Z67068	RACCORD CL16 STANDARD	COUPLING CL16 STANDARD
	1	Z60981	MANOMETRE-GONFLEUR A PIEDS 08	PRESSURE GAUGE 08 FOOT PUM
	1	Z60591	HOUSSE RIB 310 CPT S/LOGO	STRORAGE BAG SR 310 W/O LOGO
	1	Z6730	V/REP.BATEAUX STRONGAN	STRONGAN BOATS REPAIR KIT
	1	Z60798	PALETTE TISSU STG P/REPAR.06	COLOURED FAB.PVC 06 F/REPAIR
	1	Z60186	AUTO-COLLANT SECURITE	STICKER -SAFETY-
	1	Z3018	MAN.PROP T1 GENERALITES	MAN.PROP T1 GENERALITES
	1	Z7121	MAN PROP. T2 YL1 R	OWNERS MAN V.2 YL1 R

